



## STATEMENT OF QUALIFICATIONS SURVEY



**SERVING THE INTERMOUNTAIN WEST!**

CIVIL | GEOTECHNICAL | ENVIRONMENTAL | MATERIALS TESTING | SURVEYING | DRILLING



[www.inberg-miller.com](http://www.inberg-miller.com)

## GREETINGS FROM IME!

Welcome to Inberg-Miller Engineers, where precision meets excellence in every surveying endeavor. With a legacy spanning five decades, we have been at the forefront of the surveying industry, delivering unparalleled expertise, reliability, and innovation to clients across diverse sectors.

The following information has been compiled to give you a better understanding of the breadth of surveying services offered by Inberg-Miller Engineers.



What sets us apart is our dedication to client satisfaction. We prioritize clear communication, transparency, and responsiveness throughout the surveying process, ensuring that you are informed and empowered every step of the way. Our goal is not only to meet your expectations but to surpass them, providing unmatched value and peace of mind.

As you navigate the complexities of your next project, trust Inberg-Miller Engineers to be your partner in success. We invite you to explore our comprehensive range of surveying services and discover why clients have relied on us for over fifty years to deliver precision, reliability, and excellence.

Sincerely,  
INBERG-MILLER ENGINEERS

Randall S. Stelzner, P.L.S., CFedS  
Survey Manager  
Past President Professional Land Surveyors of Wyoming



# OVERVIEW

IME was originally founded as a surveying company (Inberg Surveying Company, Inc.) in 1971. Our capabilities quickly expanded to include engineering services, but surveying has always been one of the main strengths of our company. In addition to projects which are entirely surveying, almost every engineering project requires surveying services during the design and construction phases.

We also provide services completed with a drone, which includes aerial photography, topographic surveys, volume surveys, and remote inspection.

Our current staff of Professional Land Surveyors offers decades of combined survey experience. We are licensed to perform land surveys in all the Rocky Mountain States. We also have on staff a Certified Federal Surveyor, which is a certification program that requires approximately 150 hours of intense training and testing to hone the skills required to work in lands of the Public Land Survey System and on Indian Lands. Completion of this program provides for a certification from the Bureau of Land Management.



- Cadastral surveys to determine section lines and section subdivisions
- Boundary retracement surveys to establish property lines and right-of-ways
- Subdivision design and staking
- Mapping site topography and existing features
- Ground surveys to establish survey control points for project development and aerial surveys
- Power transmission centerline surveys
- Oil and gas well site and access road surveys
- Preliminary, construction and as-built pipeline surveys
- River and flood plain cross sections for hydraulic analysis
- Construction staking for sewer, water, roads, buildings, reclamation and site development
- Surveys to measure quantities and earthwork volumes
- Water rights





# SURVEYING SERVICES

## Property Survey

A property boundary survey is a detailed examination and documentation of the physical boundaries of a piece of land or property. This survey is conducted by licensed surveyors to accurately determine the legal boundaries, dimensions, and features of the property. Boundary surveys are essential for various purposes such as property transactions, development projects, resolving disputes, and ensuring compliance with local regulations. Our surveyors use advanced tools and techniques to measure and map the boundaries, including GPS technology, total stations, and traditional measuring instruments. The information gathered during a boundary survey provides clarity and legal certainty regarding property ownership and boundaries, helping to prevent conflicts and ensure proper land use and development.



**THE ENGINEERS AT INBERG-MILLER  
ENGINEERS HAVE THE EXPERIENCE NECESSARY  
TO COMPLETE YOUR SURVEY WITH ACCURACY.**

**OUR TEAM IS RESPECTFUL TO YOUR  
PROPERTY!**



## ALTA Survey

An ALTA survey (American Land Title Association survey) is a detailed land survey commonly used in real estate transactions, especially for commercial properties. It adheres to the standards set by the American Land Title Association (ALTA) and the National Society of Professional Surveyors (NSPS). An ALTA survey includes pertinent property information that potential landowners and lenders can rely on including property boundaries, easements, rights-of-way, encroachments, zoning, flood zone classification, improvements and features, and a property legal description. ALTA surveys are important as they are often required for title insurance to protect against disputes, ensures the property is free of boundary issues or encroachments, helps lenders and buyers assess property risks before a sale, and used in commercial real estate transactions and refinancing.



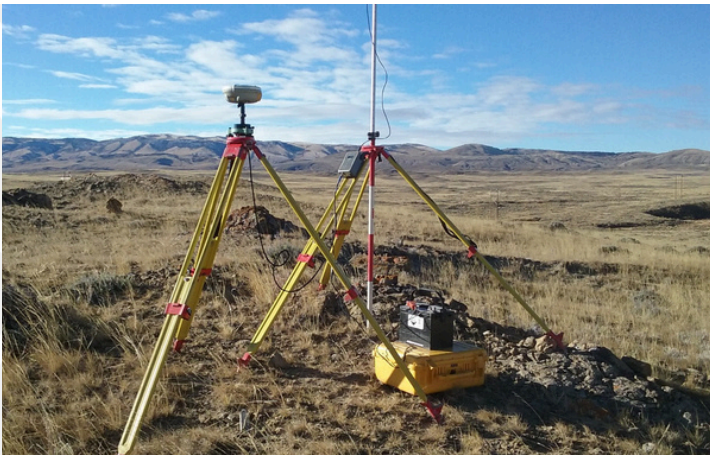
# SURVEYING SERVICES

## Topographic Survey

A topographic survey is a detailed examination and mapping of the natural and man-made features of a piece of land. It involves measuring and recording the elevation, contours, and other physical characteristics of the terrain. Topographic surveys are essential for various purposes, including land development, engineering design, environmental assessment, and construction planning. Our surveyors use specialized equipment such as total stations, GPS receivers, and drones to collect accurate data about the land's surface features. The resulting topographic maps and three dimensional surface models provide valuable information for designers, engineers, and planners to understand the existing conditions of the site and make informed decisions about project feasibility, design, and construction.

### **COST & TIME CONSIDERATIONS IN TOPOGRAPHIC SURVEYS – WHY HIRE US?**

- **EFFICIENCY WITHOUT COMPROMISE**
- **COST-EFFECTIVE SOLUTIONS**
- **SCALABILITY FOR ANY PROJECT**
- **REGULATORY COMPLIANCE & RISK REDUCTION**
- **SEAMLESS INTEGRATION WITH ENGINEERING & DESIGN**



# SURVEYING SERVICES

## Construction Staking Survey

A construction staking survey is a crucial step in the construction process, ensuring that structures and infrastructure are built accurately according to design plans and specifications. This survey involves marking the precise locations and elevations of proposed structures, roads, utilities, and other features on the ground before construction begins. Our surveyors use the design plans as reference points to stake out the locations where construction activities will take place. Construction staking helps contractors accurately position and align materials and equipment during the construction phase, ensuring that buildings, roads, and utilities are constructed in the correct locations and at the right elevations. It helps prevent errors, ensures compliance with design specifications, and contributes to the overall success and efficiency of the construction project.



**AT INBERG-MILLER WE KNOW THAT AS-BUILT SURVEYS, WHICH DOCUMENT THE FINAL STATE OF A CONSTRUCTION PROJECT, CAN PRESENT SEVERAL CHALLENGES:**

- **ACCURACY**
- **ACCESSIBILITY**
- **TIME CONSTRAINTS:**
- **COORDINATION WITH MULTIPLE STAKEHOLDERS**
- **CHANGES DURING CONSTRUCTION**
- **DATA MANAGEMENT**

## As Built Survey

Our seasoned surveyors have an eye for detail and a thorough understanding of construction processes. With years of experience in the field, we can identify discrepancies between design plans and the final construction. We have successfully navigated various construction environments, from complex urban sites to remote rural locations. We employ strategic planning and innovative techniques to overcome accessibility challenges, ensuring comprehensive coverage of the construction site. We recognize the importance of timely completion of as-built surveys. Leveraging our efficient workflows and streamlined processes, we deliver accurate results within project timelines without compromising on quality. Our team excels in communication and collaboration, fostering strong relationships with all project stakeholders. We work closely with contractors, engineers, and architects to gather accurate information and address any discrepancies promptly. With our proactive approach, we anticipate potential changes during construction and adapt our surveying methodologies accordingly. We meticulously document alterations to ensure the final as-built records accurately reflect the completed project. In summary, our team's experience, expertise, and commitment to excellence enable us to overcome the challenges associated with conducting as-built surveys effectively. We pride ourselves on delivering accurate, reliable, and comprehensive documentation that exceeds client expectations and supports the success of construction projects.

# FIRM PROFILE

## EXPERTISE

Inberg-Miller Engineers employs over 65 civil, geotechnical, and environmental engineers, land surveyors, scientists, technicians, and administrative staff.

Our staff holds advanced degrees and training in specific disciplines, in addition to being versatile enough to assist in Inberg-Miller's overall mission of "Quality Solutions through Teamwork."

We have Certified Federal Surveyors (CFedS) in house to perform those surveys requiring this certification.

## EQUAL OPPORTUNITY EMPLOYER

Inberg-Miller Engineers is an equal opportunity employer. All applicants will be considered for employment without attention to age, race, color, religion, sex, sexual orientation, gender identity, national origin, veteran or disability status.

## SAFETY

At Inberg-Miller Engineers safety is our top priority. As such, we have developed a "culture" of safety which all our employees have adopted as standard working practice. Our culture of safety transcends our work in the office, laboratory, and field, to the homes of our employees. We have developed this long-standing culture of safety by conducting weekly office safety meetings, job site tailgate meetings, performing job site analysis (JSAs), attending site-specific safety training at various facilities, as well as hosting company-wide safety meetings during our annual corporate week. During our annual safety meeting, we discuss concerns, equipment, and review standard safety practices. We are proud of our low incident rates and have received numerous safety awards through the Wyoming Contractors Association for zero-incident rates based on man-hours worked. Our clients have grown to appreciate our attention to safety.



FIND THE OFFICE CLOSEST TO YOU!

SCAN  
QR CODE



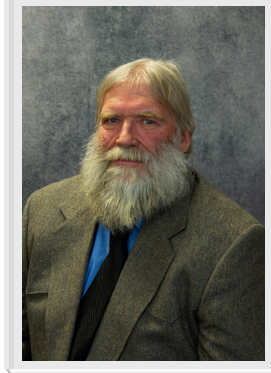
OFFICE LOCATIONS

WYOMING  
COLORADO  
NEW MEXICO



# MEET OUR TEAM

**YOUR PROJECT,  
OUR PRIORITY!**



Randall S. Stelzner, P.L.S., CFedS  
Survey Manager  
[rstelzner@inberg-miller.com](mailto:rstelzner@inberg-miller.com)



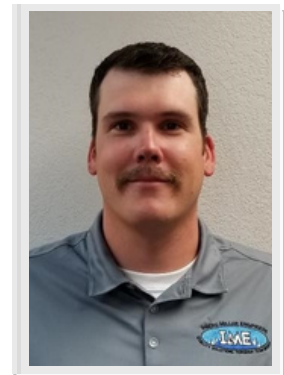
Travis Ferguson, P.L.S.  
Assistant Survey Manager  
[tferguson@inberg-miller.com](mailto:tferguson@inberg-miller.com)



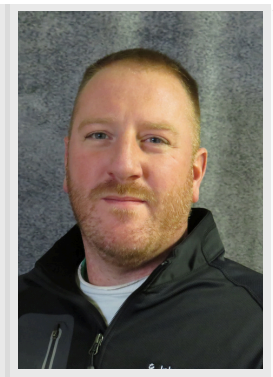
Mike Hammock  
CAD Designer and Draftsman  
[mhammock@inberg-miller.com](mailto:mhammock@inberg-miller.com)



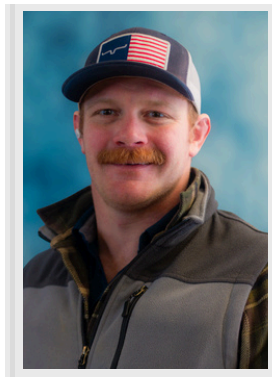
Derek Searles  
Crew Chief  
[dsearles@inberg-miller.com](mailto:dsearles@inberg-miller.com)



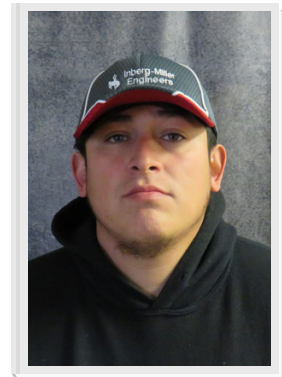
Travis Hiatt  
Crew Chief  
[thiatt@inberg-miller.com](mailto:thiatt@inberg-miller.com)



Adam Schroeder, P.L.S.  
Surveyor  
[aschroeder@inberg-miller.com](mailto:aschroeder@inberg-miller.com)



Seth Stodghill  
Crew Chief  
[ssodghill@inberg-miller.com](mailto:ssodghill@inberg-miller.com)



Julian Martinez  
Crew Chief  
[jmartinez@inberg-miller.com](mailto:jmartinez@inberg-miller.com)

# PROJECT EXPERIENCE

*From the field to the office, Inberg-Miller Engineers brings extensive experience across nearly every industry. Our team has successfully executed projects in land development, transportation, energy, water resources, and more, delivering precise and reliable surveying solutions. With a commitment to accuracy and efficiency, we integrate advanced surveying techniques and engineering expertise to meet the unique challenges of each project. Whether working on large-scale infrastructure or private development, we prioritize quality, regulatory compliance, and cost-effective solutions. Our diverse project portfolio reflects our dedication to innovation and excellence in every phase of design and construction.*



## OUR EXPERIENCE INCLUDES:

- ✓ Airports
- ✓ Community Projects
- ✓ Educational Facilities
- ✓ Highways, Roads & Bridges
- ✓ Industrial
- ✓ Multi-Family Housing
- ✓ Oil & Gas
- ✓ Retail / Commercial

*The following pages include a few projects that exemplify our experience. While the list is by no means comprehensive, it displays our versatility and ability to provide value to your project.*

**OUR TEAM IS AVAILABLE TO DISCUSS  
OR PROVIDE A DETAILED PROPOSAL  
SHOWCASING OUR RELEVANT  
PROJECT EXPERIENCE!**



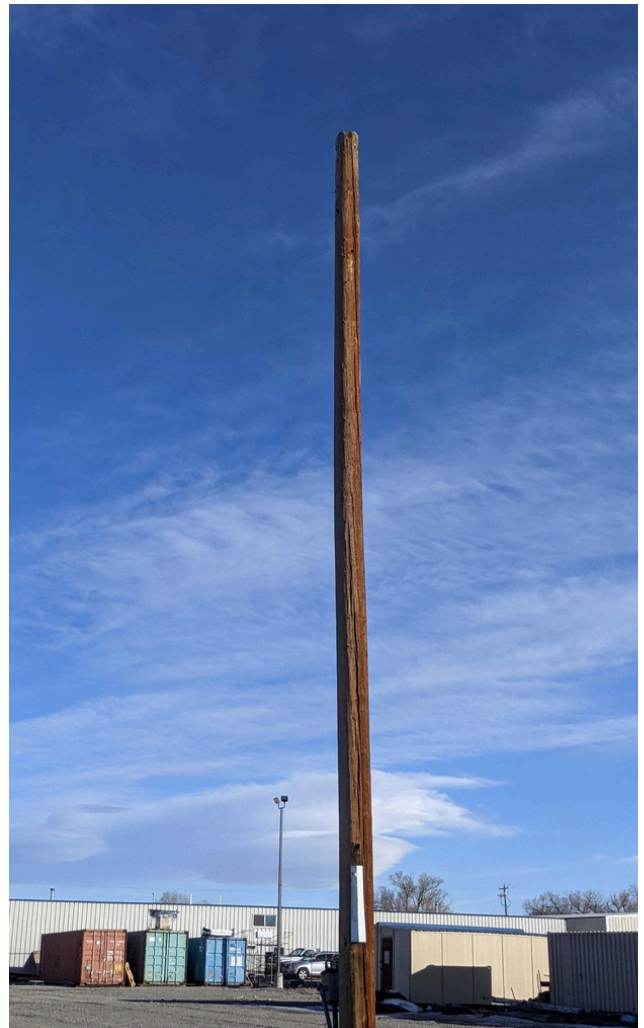


# PROJECT EXPERIENCE

## WYOLINK COMMUNICATION TOWERS

Wyolink provides communications for public safety and service agencies across Wyoming, within and outside their home areas. The system is interoperable, meaning that agencies can directly communicate with each other in larger-scale events and operations, whether they are nearby or even across the state. In 2019, Wyolink began upgrading its system with 16 new towers and broadband internet where available.

Inberg-Miller Engineers provided survey and mapping services to complete site surveys for new and existing communications towers. Completing FAA 2C Certification letters was also required. This project started in 2019 and is ongoing. This project started by working with Pyramid Network Services and has now shifted to Mission 1 Communications, both providing design services for WYDOT. To date, site surveys have been completed at 16 sites, all over the state of Wyoming.





# PROJECT EXPERIENCE

## NATIONAL RETAIL CHAIN

Inberg-Miller Engineers has partnered with a national retail chain to provide fast-paced site development and construction of their stores located throughout Wyoming. We provided primary site information for feasibility and due diligence of the site's potential.

Once determined that the site was developable, Inberg-Miller provided full design and survey services, from ALTA surveys, geotechnical exploration and reporting, civil site design, traffic studies, SWPPP Plans, asbestos inspection, and testing of existing structures to be demolished, and construction survey staking. We attend public meetings for requested variance and rezoning of the site. Other services include site plan permitting and building permit submission.

All total IME has performed work at 18 sites in 15 different communities, with many more sites in the development works.



## CHEYENNE AIRPORT



Drawing upon our extensive experience in airport infrastructure projects, our surveying team will overcome the unique challenges posed by the Cheyenne Airport runway reconstruction project. We collaborated closely with the project stakeholders, including engineers, contractors, and airport authorities, to ensure seamless coordination and timely delivery of surveying services. IME worked with several different contractors for all phases of the reconstruction that spanned 3 years.

# PROJECT EXPERIENCE

## BEAR TRAP-NATRONA COUNTY

The Natrona County Parks Department services Natrona County and the various recreational amenities for its citizens and visitors to the county alike. One area of the county that the Parks Department oversees, in particular, is Beartrap Meadow on Casper Mountain. Beartrap is a staple of Casper Mountain and annually hosts the Beartrap Summer Festival which features a variety of music genres, including bluegrass, folk, country, rock, and more. To enhance the user experience at the park, the Natrona County Parks Department has proposed incorporating covered shelters at various strategic locations. The Parks Department required that the shelters be designed to withstand Casper Mountain's demanding 100 pounds per square foot snow load, while aesthetically appearing to be an integral piece of the mountain's rustic charm. The Natrona County Parks Department and the Board of County Commissioners elected to utilize Inberg-Miller Engineers' services for several reasons including, but not limited to, our in-house full set of services including civil design, structural design, construction administration, and construction materials testing. Our civil and structural design services were pivotal with the Parks Department and the Board of County Commissioners because we were able to provide fully customizable designs that met their specific needs, from access roads to the shelter locations to the design and materials used for the shelters.

## BLUELINE DEVELOPMENT



IME worked with a developer who is committed to building quality, affordable housing in rural and underserved communities. We provided site design, traffic studies, geotechnical engineering, environmental site assessments, ALTA and construction surveying, and construction materials testing services for the developer on several multi-family housing projects.

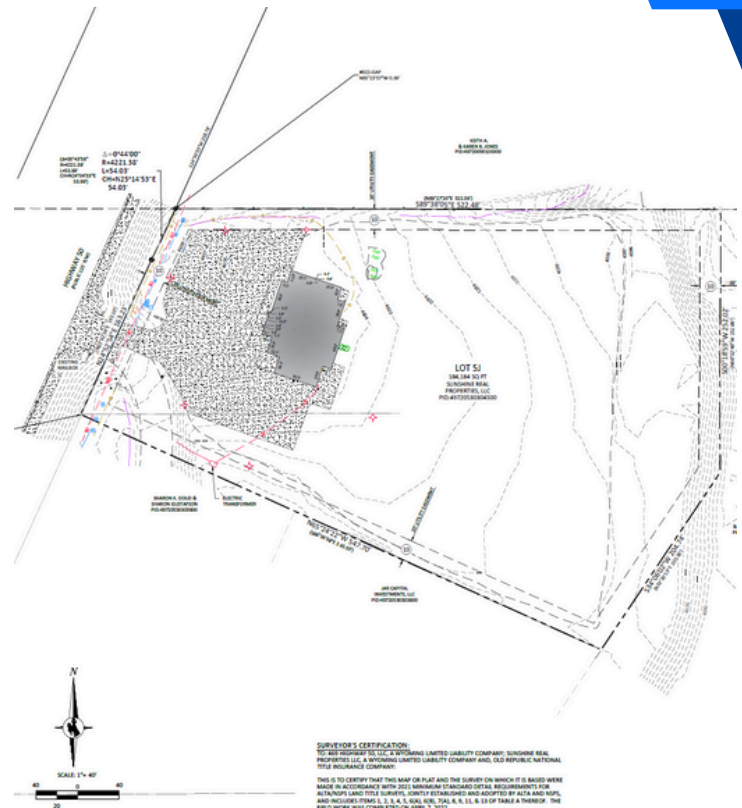
- Liberty Square Apartments in Casper
- Freestone Apartments in Laramie
- Hawk's Point in Cheyenne
- Juniper Ridge Apartments in Casper
- Granite Springs in Cheyenne
- Discovery Village in Rapid City, South Dakota
- Platte River Apartments in Douglas
- Alder Park Apartments in Laramie
- Big Horn Flats in Sheridan
- Flat Creek Apartments in Jackson



# PROJECT EXPERIENCE

## HOSKINSON PROJECTS

An ALTA survey, short for the American Land Title Association, is a comprehensive land survey conducted to provide detailed information about a property's boundaries, improvements, easements, and other relevant features. The ALTA survey for Hoskinson is a critical step in due diligence processes for real estate transactions, ensuring that buyers, lenders, and developers have accurate and reliable information about the property's status and potential liabilities. Our team has completed multiple projects for Hoskinson.



## TWIN PINES BISON RANCH



Through the successful completion of multiple projects, we provided a range of services. The key services included:

- Boundary Determination
- Improvement Location
- Easements and Restrictions
- Zoning Compliance
- Title Commitment Review





# OUR COMPLETE SERVICES

## CIVIL ENGINEERING

- Land Use Planning & Engineering
- Subdivisions
- Commercial and Industrial Site Plan
- Highways, Streets, and Parking Areas
- Water Supply and Sewage Disposal Systems
- Storm Water Systems
- Site Reclamation Planning and Design
- Civil 3D Drafting Services

## GEOTECHNICAL

- Subsurface Exploration and Drilling
- Geology and Hydrogeologic Studies
- Geotechnical Studies
- Analysis / Recommendations on all types of Structures
- Foundation Excavation & Construction Observation
- Groundwater Monitoring Wells
- Geotechnical Laboratory Testing
- Geophysical Testing and Exploration

## ENVIRONMENTAL

- Phase I, II, & III Environmental Site Assessments
- Asbestos Surveys
- Environmental Remediation Wells
- Groundwater Sampling
- Surface Water Sampling
- Well Installation / Permitting
- Solid Waste Management, Planning, Permitting, and Design
- NEPA Environmental Assessment
- Spill Prevention, Control, and Counter Measure (SPCC)
- Storm Water Pollution Plans (SWPPP)
- Wetlands Delineation
- Vapor Encroachment and Intrusion Assessment

## DRILLING

- Contract Drilling
- Solid Flight Auger Drilling
- Air Rotary Drilling
- Air Coring
- Mud Rotary Drilling
- Macro Sampling (Contract Drilling)
- Environmental Drilling - Licensed in Wyoming, Montana, Nebraska, Idaho, North Dakota, and South Dakota

## LAND SURVEYING

- Property Surveys
- Topographic Surveys
- Global Positioning System (GPS)
- Pipeline and Utility Route Surveys, As-Built Surveys
- Construction Staking
- Water Rights
- Oil & Gas Well Locations and Pipelines
- Computer Aided Design and Drafting (CADD)
- ALTA/NSPS Land Title Surveys
- Drone Surveys

## CONSTRUCTION MATERIALS TESTING

- Concrete Testing - air content, slump, and unit weight
- Concrete Lab Testing - compressive and flexural strength
- Field Testing - in place density and moisture content of soils
- Soil and Aggregate Testing - compaction characteristics, particle size analysis, and atterberg limits testing

## SPECIAL INSPECTIONS

- Soils
- Reinforced Concrete
- Structural Masonry Construction
- Structural Steel S1 & S2
- Spray Applied Fire Proofing



CIVIL | GEOTECHNICAL | ENVIRONMENTAL | MATERIALS TESTING | SURVEYING | DRILLING